



QWM 11 V2

UHF Fixed Frequency Wireless Microphone System

Instruction Manual



Contents

1. Contents & Introduction
2. Main Features
3. Receiver
4. Receiver Operation & Installation
5. Handheld Microphone
6. Technical Specifications

Thank you for purchasing this Q-Audio product, we are sure that it will serve you for many years to come.

To optimise the performance of this product, please read these operating instructions carefully to familiarise yourself with the basic operations of this unit. Please retain them for future reference. This unit has been tested at the factory before being shipped to you.

To prevent or reduce the risk of electrical shock or fire, do not expose the unit to rain or moisture. To prevent a fire hazard, do not expose the unit to any naked flame sources. Unplug this apparatus during lightning storms or if it is unlikely to be used for long periods of time.

When installing the unit, please ensure you leave enough space around the unit for ventilation. Slots and openings in the unit are provided for ventilation to ensure reliable operation of the product and to protect it from overheating.

To prevent fire hazard, the openings should never be blocked or covered.

The unit is mains powered, always handle the power cable by the plug. Never pull out the plug by pulling on the cable. Never touch the power cable when your hands are wet as this could cause an electric shock. Do not tie a knot in the cable. The power cable should be placed such that it is not likely to be stepped on. A damaged power cable can cause a fire or give you an electrical shock. Check the power cord periodically, if you ever find that it is damaged, replace it before using the unit again. Contact your retailer for a replacement.

The voltage of the available power supply differs according to country or region.

Be sure that the power supply voltage of the area where this unit is to be used meets the required written on the unit.

The lightning flash symbol inside a triangle is to alert the user to the presence of high voltage within the unit's enclosure that may be of sufficient power to constitute a risk of electrical shock to persons.

Caution: to prevent the risk of electric shock, do not attempt to open the unit. No user-serviceable parts inside.

Refer all servicing to qualified service personnel.

The exclamation mark inside a triangle is intended to alert the user to the presence of important operating and maintenance instructions in the literature accompanying the appliance.

Select the installation location of your unit carefully. Avoid placing it in direct sunlight or locations subject to vibration and excessive dust. Do not use the unit where there are extremes in temperature (below 41°F / 5°C or exceeding 95°F / 35°C).

Unpacking and Safety - Please unpack your new product carefully. Your new product should reach you in perfect condition. Please check that no damage has occurred during transit. If any damage is found, do not operate your unit. Please contact the retailer you purchased it from immediately. If there is any damage to the mains cable do not use the device. Always disconnect the unit from the mains supply when carrying out any cleaning of the unit.

Manufacturer declarations

In compliance with the following requirements: RoHS Directive (2002/95/EU) and WEEE Directive (2002/96/EU), and Battery Directive (2006/66/EU). If this product is ever no longer functional please take it to a recycling plant for environmentally friendly disposal. Any supplied batteries can also be recycled.

CE declaration of conformity

R&TTE Directive (1999/5/EU), EMC Directive (2004/108/EU), Low Voltage Directive (2006/95/EU).

The declarations are available on application from info@q-audio.co.uk

Before putting device into operation, please observe the respective country-specific regulations.

Due to continuous product development, please ensure that you have downloaded the latest instruction manual for this product from the Q-Audio website

Telephone: (+44) (0) 203 598 5164 • Email: info@q-audio.co.uk • Web: www.q-audio.co.uk

If this product is ever no longer functional please take it to a recycling plant for environmentally friendly disposal.

Due to continuous product development, specifications and appearance are subject to change. © Copyright Q-Audio. E&OE.



Main Features

UHF fixed frequency wireless microphone system

2 frequency options (863.1MHz + 864.1MHz / 863.7MHz + 864.9MHz)

Twin handheld transmitter systems

SMT single-chip circuit design

Low battery consumption and long battery life

LED backlit display on both the receiver and transmitter

Integrated squelch circuit which rejects external interference

High quality dynamic microphone capsule

Operation distance up to ~50 meters.

2x Independent XLR outputs (One for each Channel)

1x 1/4" Jack mixed output (combines both Channel A + Channel B)

Independent volume control per channel

Low power, Low voltage power supply

2x Adjustable, non-removable antenna

Comes with rugged ABS carry case

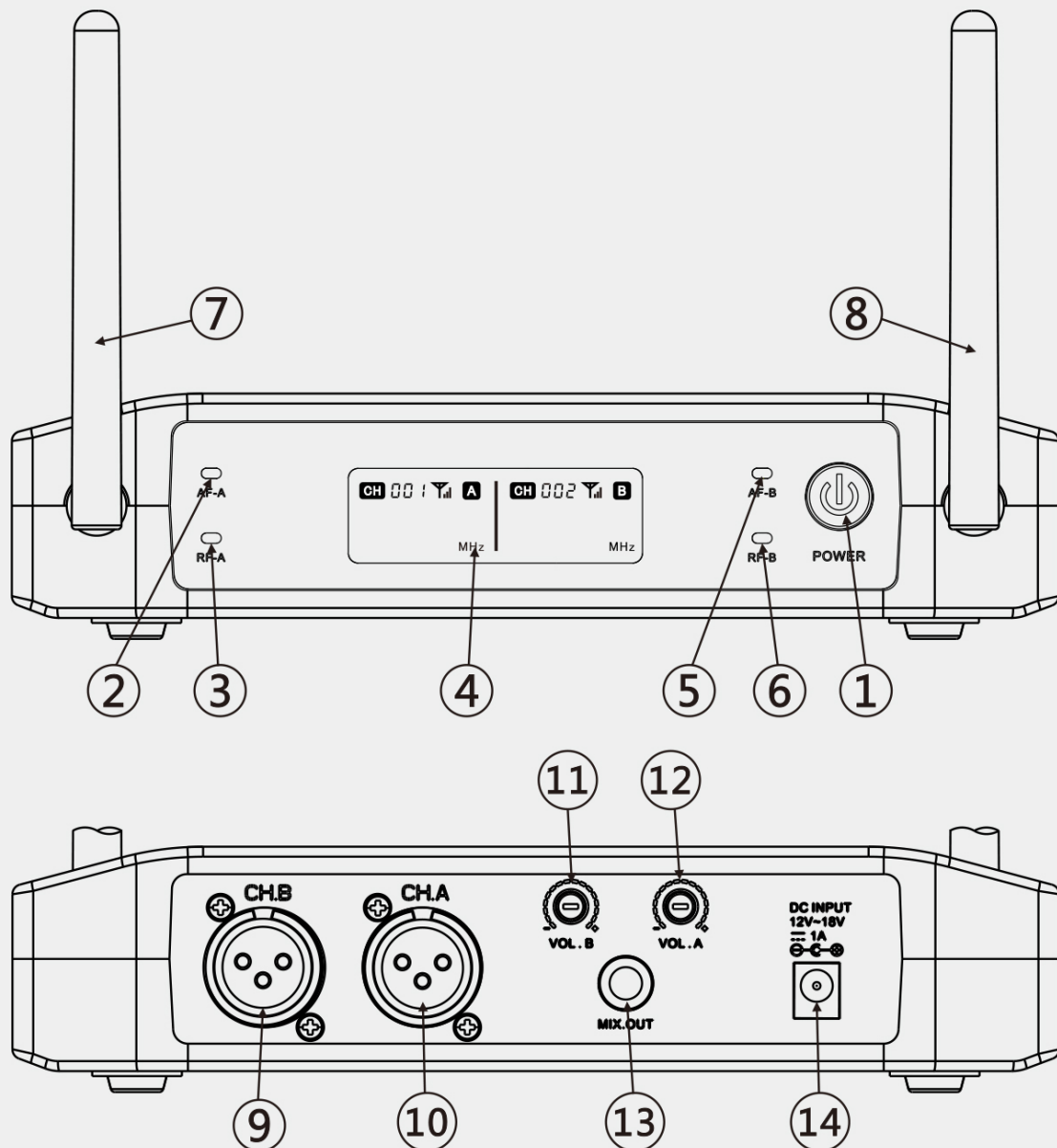
RF and AF indicators per channel

Easy setup and operation

Fast startup

Receiver

- | | |
|---------------------------|---|
| 1) Power On/Off Switch | 8) Antenna B |
| 2) Channel A RF Indicator | 9) Channel B Balanced Output (XLR) |
| 3) Channel A AF Indicator | 10) Channel A Balanced Output (XLR) |
| 4) Display | 11) Channel B Volume Knob |
| 5) Channel B RF Indicator | 12) Channel A Volume Knob |
| 6) Channel B AF Indicator | 13) Unbalanced Mixed Output (1/4" Jack) |
| 7) Antenna A | 14) 12-18V 1A DC Input |



Receiver Operation

1) Connect The Power

Connect the power cable to the DC socket (14), make sure the power adapter is the correct voltage, polarity and current before connecting.

2) Connect Your Audio Equipment

Connect the receiver's output(s) to your audio equipment's input(s) via the XLR or 1/4" Jack outputs (9, 10 + 13)

3) Turn On The Power

Press the power button (1) to turn on the receiver, the display (4) will light to indicate the unit is powered on.

3) Turn On The Transmitter(s) And Test

Turn on the transmitter(s) and the matching channel's RF light will light.

The matching channel's AF light will flash to indicate an audio signal is being received when a microphone is in use.

Ensure the volume knobs (11 + 12) are turned up if no audio level is being produced from the XLR or Jack outputs.

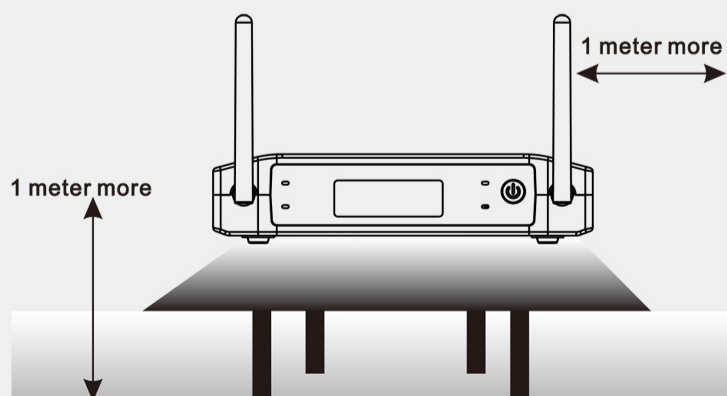
Receiver Installation

The receiver should be placed more than 1 meter away from a wall or floor to avoid interference.

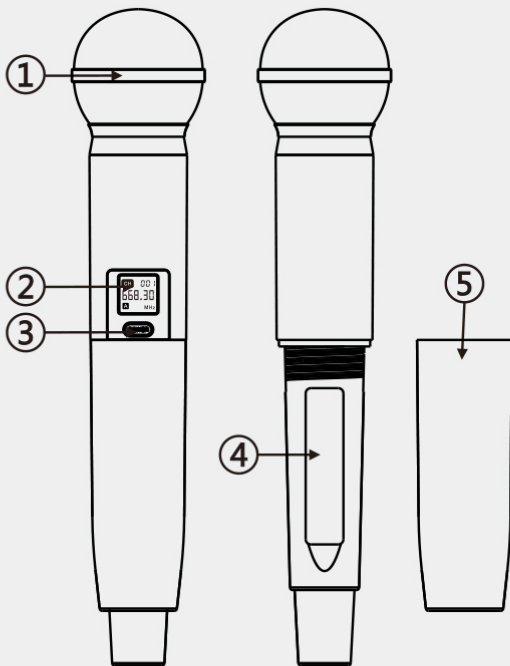
The antenna should not be covering the display and should be pointing up.

There should be a clear line of site between the receiver and the transmitter for best possible signal and transmission distance.

The receiver should be placed horizontally on a flat surface



Handheld Microphone



1) Dynamic Microphone Capsule

Used to pickup sound

2) Display

Indicating the transmitter frequency

3) On/Off Switch

Turn the microphone on and off

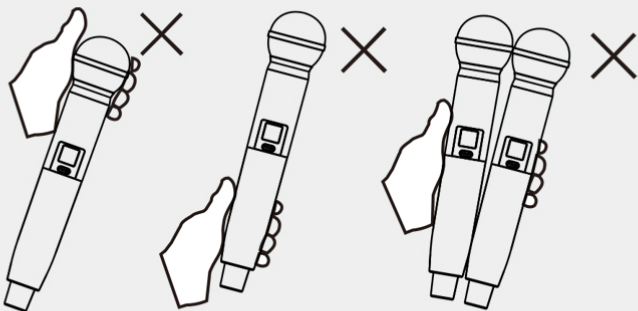
4) Battery Compartment

Houses the required 2x 1.5V AA Batteries

5) Removable Cover

Unscrew and remove to reveal the battery compartment

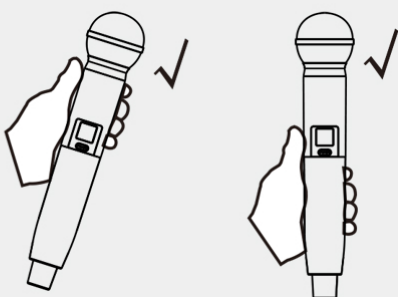
Handheld Operation



- 1) Unscrew the battery compartment
- 2) Insert 2x 1.5V AA Batteries ensuring the polarity is the correct way
- 3) Press the on/off switch, the display will light to indicate working status
- 4) Make a sound near the capsule, the receiver's AF light will flash (when turned on) to indicate signal is being received

Handheld Technique

- DO NOT cup the capsule
- DO NOT cover the base of the microphone
- DO NOT use two microphones side by side
- DO hold in the centre or the upper part of the microphone body
- DO place the microphone within 15cm of the audio source you wish to capture



Technical Specifications

Receiver

Fixed System Frequencies: 863.1MHz/864.1MHz + 863.7MHz/864.9MHz

Dynamic Range: >96dB

Harmonic Distortion: <0.3%

Frequency Response: 30Hz - 20KHz /+-2dB

Signal/Noise Ratio: 96dB

Receiving Sensitivity: -96dBm

Power Supply: DC 12V 500mA

Audio Outputs: 1x Unbalanced 6.3mm, 2x Balanced XLR

Transmitter

Fixed Frequency Options: 863.1MHz / 863.7MHz / 864.1MHz / 864.9MHz

Transmitter Power: 10mW

Harmonic Radiation: <-50dBc

Batteries Required: 2x 1.5V AA

Average Battery Life: >5 h

Box Contents

1x QWM 11 V2 Receiver

2x Handheld Transmitters

1x 1/4" Jack Cable

1x Power Adapter

2x 1.5V AA Batteries

1x Manual